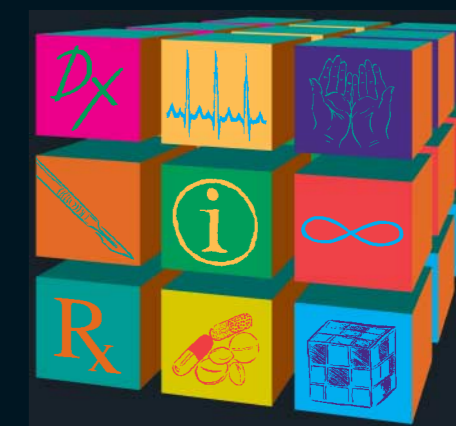


# Evidence-Based Medicine



**Editors:** Brian Haynes & Paul Glasziou

## Contents

Purpose and procedure	2		
Additional articles abstracted in <i>ACP Journal Club</i>	3		
<b>EBM Notebook</b>			
Practice Corner: Taking evidence in hand	4		
Resource Review	7		
<b>Therapeutics</b>			
Magnesium sulphate prevented eclampsia in women with pre-eclampsia	9		
Simvastatin reduced mortality and vascular events	10		
Antioxidant vitamins did not reduce death, vascular events, or cancer in high risk patients	11		
Oestrogen plus progestin was not effective for long term secondary prevention of coronary heart disease in postmenopausal women	12		
Long term oestrogen plus progestin increased venous thromboembolism and biliary tract surgery in postmenopausal women	13		
Self management with the Angina Plan reduced anxiety, depression, angina attacks, and use of medication	14		
Review: $\beta$ blockers increase fatigue and sexual dysfunction but not depression after myocardial infarction	15		
Coumadin alone or aspirin plus coumadin reduced coronary events and death after acute myocardial infarction or unstable angina	16		
Involving patients with type 2 diabetes, hypertension, and hyperlipidaemia in disease management improved outcomes	17		
Review: primary prevention strategies do not improve contraceptive use or reduce pregnancies in adolescents	18		
Lansoprazole reduced recurrence of ulcer complications in long term use of low dose aspirin	19		
		Noninvasive <i>Helicobacter pylori</i> testing was as effective as endoscopy for managing dyspepsia	20
		<i>Helicobacter pylori</i> eradication improved dyspepsia symptoms	21
		Risperidone was safe and effective for short term treatment of children with autism and serious behavioural disturbances	22
		Cognitive behavioural therapy delivered by nurses improved insight and overall symptomatology in schizophrenia	23
		Treatment of scalp lacerations with a hair apposition technique reduced scarring, pain, and procedure duration compared with suturing	24
		Tonsillectomy and adenotonsillectomy showed modest benefits in children moderately affected with recurrent throat infection	25
<b>Diagnosis</b>			
		Various history and physical examination characteristics predicted nerve root compression	26
		Review: specific combinations of symptoms effectively rule in the diagnosis of urinary tract infection based on history alone	27
		B type natriuretic peptide levels had high sensitivity but moderate specificity for detecting CHF in the emergency department	28
		Review: ELISA D-dimer is sensitive but not specific in diagnosing pulmonary embolism in an ambulatory clinical setting	29
<b>Prognosis</b>			
		Review: 1 in 8 preschool children develop $\geq 1$ complication after presenting to primary care with acute cough	30
		Functional neurological deficit but not epilepsy alone increased the risk of death in childhood epilepsy	31
<b>Economics</b>			
		Review: the cost-effectiveness of interventions for HIV/AIDS in Africa varies greatly	32